



Change
Chilango's




David Delgado Pineda


Diseño & Comunicación Visual

Egresado de la Escuela Nacional de Artes Plásticas (ahora FAD Facultad de Artes y Diseño UNAM) de la carrera Diseño y Comunicación Visual con orientación de ilustración, pero con experiencia en fotografía de producto, retoque, creación de contenidos para web, gifs, edición de video básica, materiales promocionales, contenido didáctico para plataformas de educación, elementos gráficos para e-learning, diseño de personajes para animación 2-d, diseño corporativo, papelería.

Me agrada el buen ambiente laboral, aprender, aportar, escuchar, humilde en los logros y fracasos, sociable, con sentido del humor, siempre abierto a la crítica.
Mis pasatiempos y hobbies son la fotografía, dibujo, ilustración, arte, objetos vintage, cine a blanco y negro, caminar, la música, arquitectura, museos, animaciones, caricaturas, libros, culturas prehispánicas, historia.

 Calle 11 #23 Patriotismo y Viaducto
San Pedro de los Pinos C.P 03800
Ciudad de México

 5574268407

 davideder_88@hotmail.com
reyajolote@gmail.com

Educación

◆ 2005-2007

Colegio de Ciencias y Humanidades
Plantel Oriente

◆ 2008-2012

Escuela Nacional de Artes Plásticas
UNAM

◆ 2016

EDUMAC Lomas Verdes
Curso de Diseño Gráfico con certificación
Adobe

Experiencia laboral

◆ 2014

Kamikaze Studio

◆ 2015

Revista Marnuj
Alebrigma Aqua Interactive

◆ 2016 - 2017

Intermodal Express & Sybaris Collection

Free lance para (CENCADE & Especialista
en Medios)

Skills

Photoshop

Wordpress

Illustrator

Prezi

Premiere

Power point

InDesign

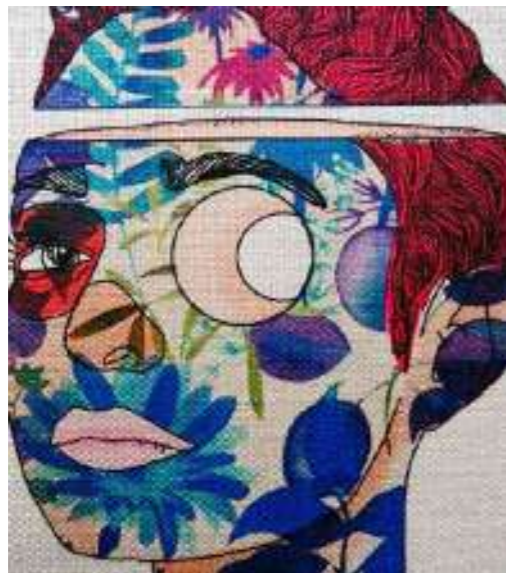
Corel Painter

Tableta Wacom

Diseño & fotografía / retoque de producto



The first time we came into a real Indian rug workshop, and noticed that each carpet was knotted string by string, we were pretty sure about it. Patterns and models were replaced by experience. More than floor covers, they seemed like art pieces.
source of inspiration". Furthermore, we were very lucky to meet in Cuenca, Eduardo Vega, one of Latin America's signature muralist Mexican out that spending.



The first time we came into a real Indian rug workshop, and noticed that each carpet was knotted string by string, we were pretty sure about it. Patterns and models were replaced by experience. More than floor covers, they seemed like art pieces.
source of inspiration". Furthermore, we were very lucky to meet in Cuenca, Eduardo Vega, one of Latin America's signature muralist Mexican out that spending.

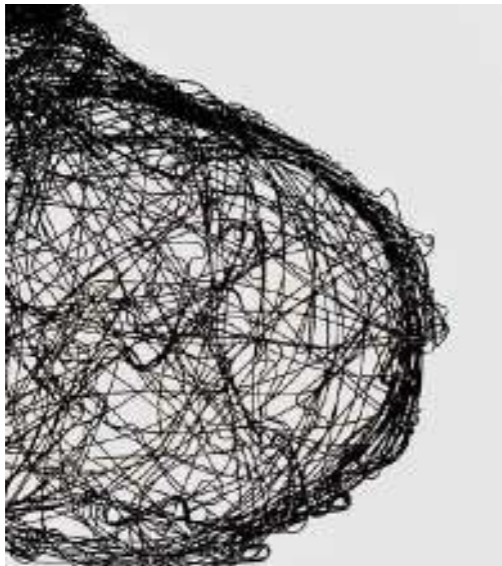




The first time we came into a real Indian rug workshop, and noticed that each carpet was knotted string by string, we were pretty sure about it. Patterns and models were replaced by experience. More than floor covers, they seemed like art pieces. source of inspiration". Furthermore, we were very lucky to meet in Cuenca, Eduardo Vega, one of Latin America's signature muralist Mexican out that spending.



The first time we came into a real Indian rug workshop, and noticed that each carpet was knotted string by string, we were pretty sure about it. Patterns and models were replaced by experience. More than floor covers, they seemed like art pieces. source of inspiration". Furthermore, we were very lucky to meet in Cuenca, Eduardo Vega, one of Latin America's signature muralist Mexican out that spending.

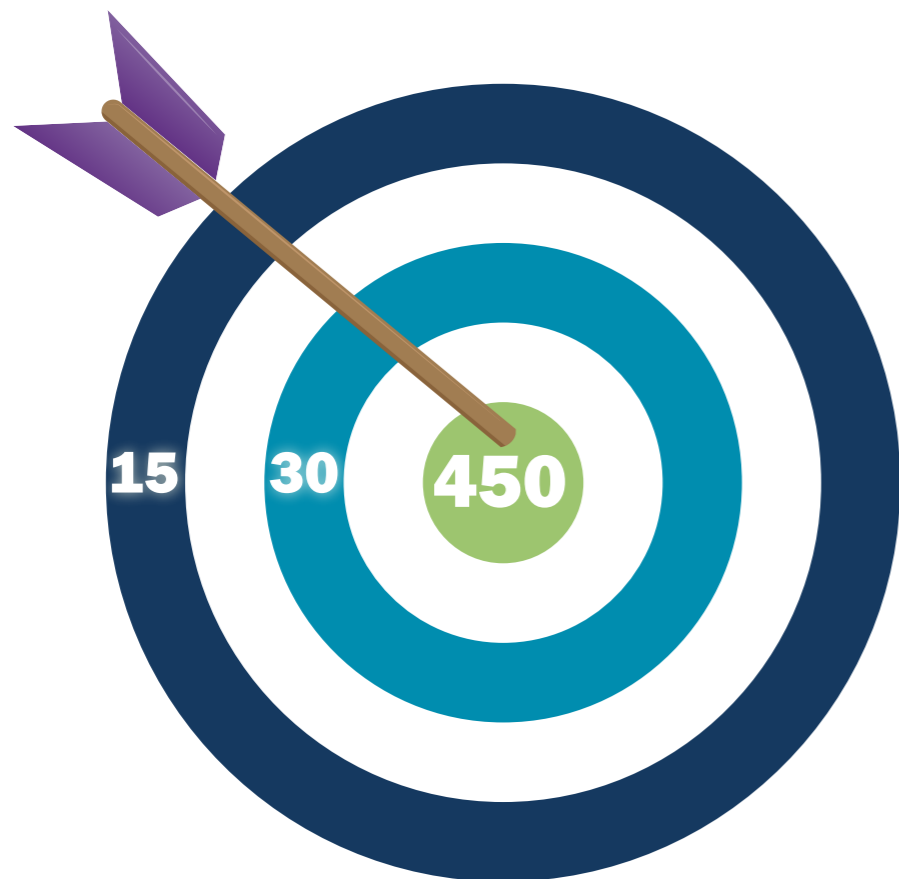


The first time we came into a real Indian rug workshop, and noticed that each carpet was knotted string by string, we were pretty sure about it. Patterns and models were replaced by experience. More than floor covers, they seemed like art pieces. source of inspiration". Furthermore, we were very lucky to meet in Cuenca, Eduardo Vega, one of Latin America's signature muralist Mexican out that spending.



The first time we came into a real Indian rug workshop, and noticed that each carpet was knotted string by string, we were pretty sure about it. Patterns and models were replaced by experience. More than floor covers, they seemed like art pieces. source of inspiration". Furthermore, we were very lucky to meet in Cuenca, Eduardo Vega, one of Latin America's signature muralist Mexican out that spending.

... En
intermodal express *ie*
 apuntamos a ...



Intermodal Express

Campañas internas, promocionales
 banners, impresos y digitales



DESPACHO DE ADUANA | SERVICIO DE ALMACENAJE | SERVICIOS AEREOS | SERVICIOS MARITIMOS | SERVICIOS TERRESTRES

THE INTERMODAL EXPRESS GROUP



WCA



**NUEVAS RUTAS
 COMERCIALES**

KINGSTON
 CARTAGENA DE INDIAS
 LISBOA • SALERNO • GÉNOVA
 VALENCIA • BARCELONA
 RÍO HAINA • CRISTÓBAL
 PUERTO LIMÓN • LIVORNO

**SALIDAS SEMANALES
 DESDE:**

- ALTAMIRA
- VERACRUZ
- PROGRESO



info@intermodalexpress.com.mx

Tel: +52 (55) 56 83 15 00

Este material es de uso exclusivo y confidencial. Toda la información contenida en él es propiedad de Intermodal Express S.A. de C.V. y no debe ser distribuida, copiada, reproducida, almacenada, utilizada ni divulgada de ninguna manera sin el consentimiento escrito de Intermodal Express S.A. de C.V. Si usted es un cliente de Intermodal Express S.A. de C.V. y desea recibir este material, debe solicitarlo a través de su representante. Cualquier uso indebido de esta información será considerado una violación de la ley y será perseguido legalmente. Intermodal Express S.A. de C.V. no se responsabiliza por los daños o perjuicios que puedan resultar del uso de esta información. Toda la información contenida en este material es de uso exclusivo y confidencial. Toda la información contenida en él es propiedad de Intermodal Express S.A. de C.V. y no debe ser distribuida, copiada, reproducida, almacenada, utilizada ni divulgada de ninguna manera sin el consentimiento escrito de Intermodal Express S.A. de C.V. Si usted es un cliente de Intermodal Express S.A. de C.V. y desea recibir este material, debe solicitarlo a través de su representante. Cualquier uso indebido de esta información será considerado una violación de la ley y será perseguido legalmente. Intermodal Express S.A. de C.V. no se responsabiliza por los daños o perjuicios que puedan resultar del uso de esta información.

www.intermodalexpress.com.mx



HECTOR HERRERA LOPEZ
FABIAN RAMOS

Tel: (823) 214 00 78 ext. 402

www.intermodalapress.com.mx



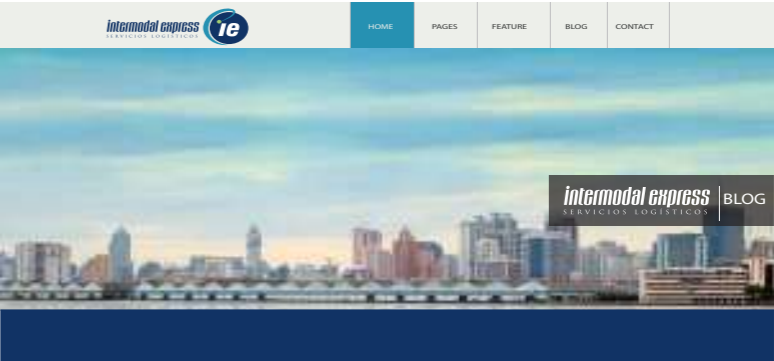



La información contenida en este mensaje es confidencial y/o privilegiada. Esta mensaje está destinado a una o varias personas determinadas. Si usted no es el destinatario de este mensaje, no debe divulgar, copiar, reproducir, ni utilizar la información contenida en este mensaje para fines ajenos a los suyos. Si usted es el destinatario de este mensaje, se le solicita que no divulgue, copie, reproduzca, ni utilice la información contenida en este mensaje para fines ajenos a los suyos. Si usted no es el destinatario de este mensaje, se le solicita que no divulgue, copie, reproduzca, ni utilice la información contenida en este mensaje para fines ajenos a los suyos. Si usted es el destinatario de este mensaje, se le solicita que no divulgue, copie, reproduzca, ni utilice la información contenida en este mensaje para fines ajenos a los suyos.

This message contains confidential and/or privileged information. This message is intended for one or more specific persons. If you are not the intended recipient of this message, you should not disseminate, copy, reproduce, or use the information contained in this message for purposes other than your own. If you are the intended recipient of this message, you are requested not to disseminate, copy, reproduce, or use the information contained in this message for purposes other than your own. If you are not the intended recipient of this message, you are requested not to disseminate, copy, reproduce, or use the information contained in this message for purposes other than your own.

Intermodal Express

Realización de firmas electrónicas internas, diagramación, gráficos, portadas y banners sección de noticias, iconos, brochures digitales para mandar por e-mail.



Chile and South Korea agree to deepen bilateral Treaty of Free Trade

Chile and South Korea had held a FTA for 12 years. In 2003, before this agreement, bilateral trade between the two countries reached nearly USD \$1,600 million, and by the end of 2015, this amount reached more than USD \$6,000 million, i.e. an increase of over 300%.



E-commerce from the perspective of WTO

The refinement of new technologies and their application in the business world has generated significant changes in the modus operandi of businesses.



República Dominicana refuerza seguridad en puertos y aeropuertos por matanza en Niza

La república Dominicana reforzó la seguridad en aeropuertos, puertos y puntos fronterizos, como medida preventiva, tras el atentado en Niza, en el sur de Francia, que dejó 84 muertos y más de un centenar de heridos.

Ultimas noticias

Recibe nuestras últimas noticias en tu correo



Chile and South Korea agree to deepen bilateral Treaty of Free Trade

Chile and South Korea had held a FTA for 12 years. In 2003, before this agreement, bilateral trade between the two countries reached nearly USD \$1,600 million, and by the end of 2015, this amount reached more than USD \$6,000 million, i.e. an increase of over 300%.

Former President Eduardo Frei said: "Korea has for decades been a strategic partner of Chile in the Asia Pacific. During our stay, we have found that despite the great distance between the two countries, the Chilean culture through our fruits, agro-industrial products, wines and others, is present in the daily life of the Korean people ". The visit of the delegation of Chile, aimed to monitor the political and economic commitments made in the framework of the visit to Santiago by the President of South Korea, Park Geun-hye, in April 2015.



The authorities stressed the political and economic relationship between the two countries and called for the need to realize the commitment to deepen NAFTA. In addition, an economic seminar with the Federation of Korean Industries (FKI for its acronym in English), a strategic partner of Chile in promoting bilateral trade was held in Seoul. Korea is the fourth largest trading partner of Chile and in recent years has climbed globally as a major player in the development of new technologies, innovation and science, elements that have also been identified as key for Chilean development.



Services

Door to door





ABOUT US

Intermodal Express offers a personalized service of questions, advice and follow up for your shipments. Enter your contact information, let us know your requirements and soon our team will contact you.

QUICK LINKS

- ALERTS AND STUFFS
- CUSTOM SHORTCODES
- PRICING PLANS
- TOGGLE ELEMENTS

GET IN TOUCH

Ave. Periferico Sur 3449 Piso. 2A
Col. San Jeronimo Laticia C.P.
+525556831500
info@intermodalapress.com.mx

Intermodal Express


Brochure de servicios, rutas comerciales, alternativas sobre embarques, buques, contenedores entre otras materias de logística.

Our Services

We are specialists in multimodal


We are specialists in multimodal transportation, as well as we have international coverage and strong business alliances in ports and airports.

Maritime



FCL, LCL and Break Bulk cargo transportation. We coordinate your shipments through personalized assistance and constant monitoring, so we can guarantee a safe delivery to the final destination.


Aerial



Aerial cargo transportation solutions to offer delivery reliability for your merchandises all around the world.

We have a wide variety of departure options to fulfill your requirements.

Inland



Through our inland freights we can offer you a 24/7 service of national and international collection and delivery.

We have the infrastructure to transport containerized (Dry van, 48' and 53' chassis, Lowboys) and oversized cargo.

Comprehensive Services

Insurance

We can assure your merchandise with a full coverage, regardless its mode of transport. You can choose either full or partial coverage.

Global Reach

Through our international correspondents we can coordinate any type of multimodal operation, tracking the cargo from its point of origin until its final destination.

Customs Clearance

We can give you advice to perform quickly and efficiently the entrance and release of your merchandise; and orientation about the documents and permits required by government agencies.

Storage

We have warehouses watched by a 24 hours CCTV to guarantee the safety of your merchandise, as well as specialized areas for highly valued merchandise management.



WHY CHOOSE INTERMODAL EXPRESS?

1 Personalized assistance

We are committed to respond you personally to make you feel comfortable during your commerce process.

2 Specialists in complex goods transportation

We can coordinate the transportation of your cargo, regardless its class, hazard, vulnerability or size (even if it is perishable) thanks to our multimodal infrastructure.

3 Punctual advice

Let us know the characteristics and special needs of your cargo, so we can choose the better route, packaging and conveyance to deliver it efficiently to its destination.



Contact us !

Main office

MÉXICO, D.F.

Periférico Sur 3449 Piso 2A.
C.P. 10200, México, D.F.
Tel: +52 55 56 83 15 00

Branches

VERACRUZ

Av. S de Mayo No. 1203-2,
C.P. 91700 A.P. 655.
Tel: +52 229 93 23 197 /
932 6455
Fax: +52 229 9311 259

TAMPICO-ALTAMIRA

Av. Hidalgo 2502 499,
Calle Moral Ser pno,
Despacho 5, Col. Altamira,
C.P. 89240 Tampico,
Tamaulipas, México
Tel: +52 833 2 14 3570
Fax: +52 833 2 12 20 23



www.intermodalexpress.com.mx



Intermodal Express

Landing page y presentación de negocios aéreos para reunión en Canada 2017.

INTERCOMPANY's / DAP

*DAP Import Charges

NOTES:
 *Above charges does not include duties and taxes, warehousing, demurrages or loading / unloading at airport, highway, custody, these are billed at cost.

*Other charges - Apply at cost

ITEM	RATE	UNIT	NOTES
Import Customs Clearance	As per DAP terms the customer responsibilities cover by consignee	each	NOT INCLUDING DUTIES & TAXES. Will be determined based on applicable HTS number. NOT INCLUSIVE: Trucking, Truck, Street, Trail, Perishable, Personal Effects, DDT
DUTIES	At Cost	At Cost	As per DAP terms the customer responsibilities cover by consignee
HANDLING	US\$ 75.00	HAIR	
DELIVERY DOCS	US\$ 150.00	HAIR	
AMS	US\$ 35.00	HAIR	
*COLLECT FEE	2% (MIN. US\$ 25.00)	ON COLLECT CHARGE	If the Air Freight is collect
*IMO SURCHARGE	AT COST	AT COST	TO BE DETERMINED based on the airline and level of commodity
MANEUVERS STORAGE and Custody	AT COST	AT COST	RATES NOT INCLUDING MANEUVERS, DELAYS OR STORAGES WHICH WILL BE AT COST. CUSTOM CLEARANCES, DUTIES AND TAXES
*INLAND FREIGHT DELIVERY	Confirm Dimension and Measure	AT COST	To be quoted on specific requirements and Address (Destination) per contract in the

INTERCOMPANY's / DDU

*DDU Import Charges

NOTES:
 *Above charges does not include duties and taxes, warehousing, demurrages or loading / unloading at airport, highway, custody, these are billed at cost.

*Other charges - Apply at cost

ITEM	RATE	UNIT	NOTES
Import Customs Clearance	USD \$250.00 or 0.42 % for merchandise value more than USD \$ 30,000.00	each	NOT INCLUDING DUTIES & TAXES. Will be determined based on applicable HTS number. NOT INCLUSIVE: Trucking, Truck, Street, Trail, Perishable, Personal Effects, DDT
DUTIES	At Cost	At Cost	As per DDU terms the customer responsibilities cover by consignee
HANDLING	US\$ 75.00	HAIR	
DELIVERY DOCS	US\$ 150.00	HAIR	
AMS	US\$ 35.00	HAIR	
*COLLECT FEE	2% (MIN. US\$ 25.00)	ON COLLECT CHARGE	If the Air Freight is collect
*IMO SURCHARGE	AT COST	AT COST	TO BE DETERMINED based on the airline and level of commodity
MANEUVERS STORAGE and Custody	AT COST	AT COST	RATES NOT INCLUDING MANEUVERS, DELAYS OR STORAGES WHICH WILL BE AT COST. CUSTOM CLEARANCES, DUTIES AND TAXES
*INLAND FREIGHT DELIVERY	Confirm Dimension and Measure	AT COST	To be quoted on specific requirements and Address (Destination) per contract in the

DAY FAVORITE

Latitude 0° 00" Collection

FINALLY HERE

SYBARIS
release your taste



SYBARIS
release your taste

LOOKBOOK

SHOP

THE GALLERY

PRIVATE GALLERY

BLOG

LAST PEYOTE GUARDIANS

Based in the Sierra Madre Occidental Mountains, the huicholes have defended their purity of language, dress and practices since their beginnings. All Huichol products reflect an astonishing mixture between fashion and tradition; these characteristics are imprinted in the handmade skull replicas, wooden pieces and bull and bighorn sheep skulls that we offer within this collection.



QUICK VIEW
XIXÍYA



QUICK VIEW
XETÁME



QUICK VIEW
UHAYE

SYBARIS COLLECTION

Fotografía de producto para web y showroom ,promocionales para redes sociales instagram,facebook, blogspot, diagramación de información para piezas en venta.



Ilustración & diseño



REVISTA MARNUJ 2015
ILUSTRACIÓN DIGITAL



ILUSTRACIÓN & DISEÑO "BOLIS TROPI ICE"
VERACRUZ 2010



ILUSTRACIÓN & DISEÑO INTERFAZ "ALEBRIGMA"
PLATAFORMA EDUCATIVA INFANTIL 2015



HICHAE Hispanic International Childrens Art Exhibition

El conejo y la luna
David Eder Delgado Pineda [México]
Digital
www.behance.net/uno-muerte
<http://chango-chilango.blogspot.mx>



Bear • Laura Vargas [Colombia]
Digital
www.facebook.com/laluilustracion
www.drawfolio.com/es/portfolios/laluilustracion



La visita
Paulina Barraza Gómez [México]
Mixed media
<http://paulinas-paulinas.blogspot.mx>



10

Bringing the arts, cultural diversity and the various forms of expression of the world to children

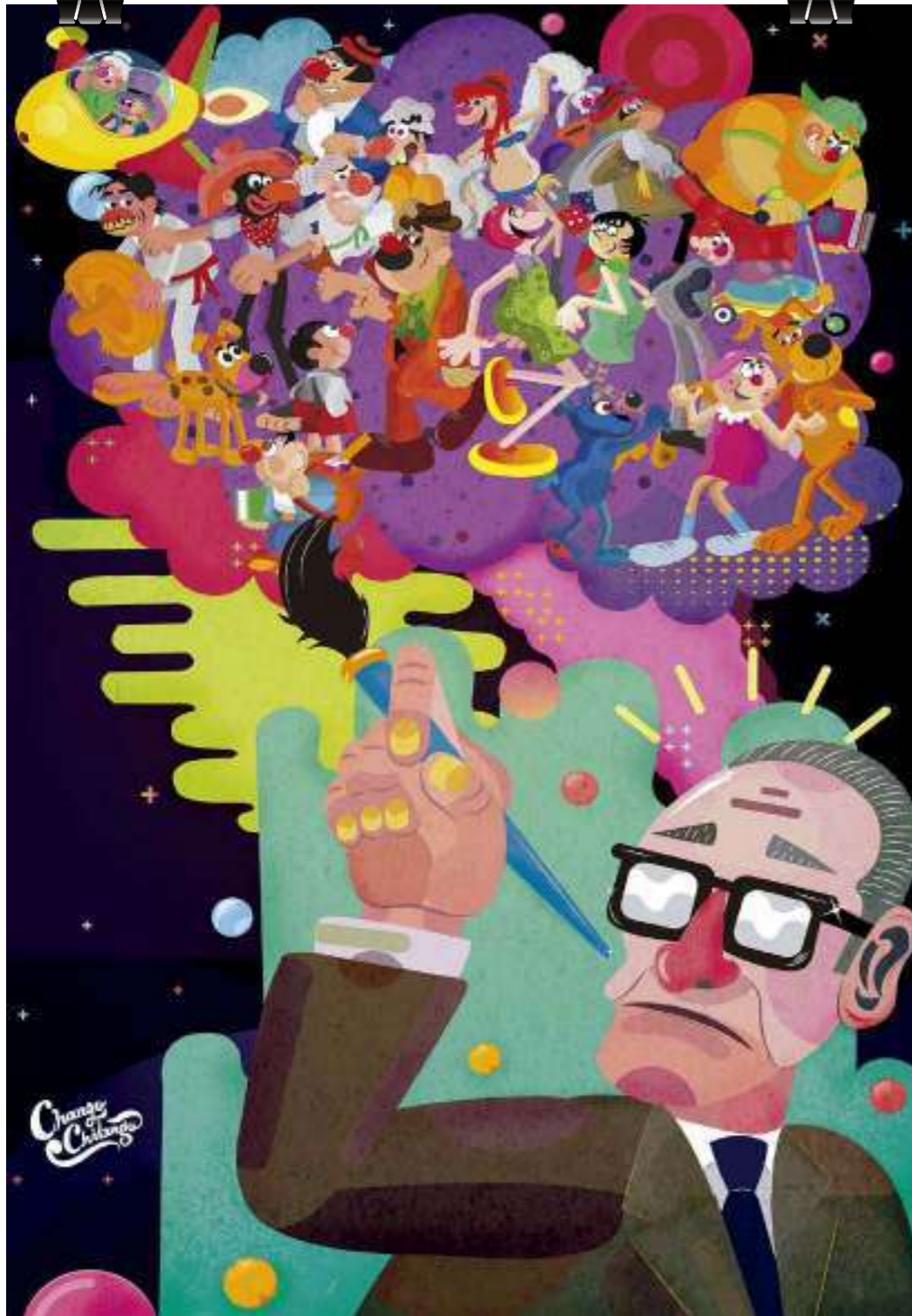
HICHAE
Hispanic International Childrens Art Exhibition



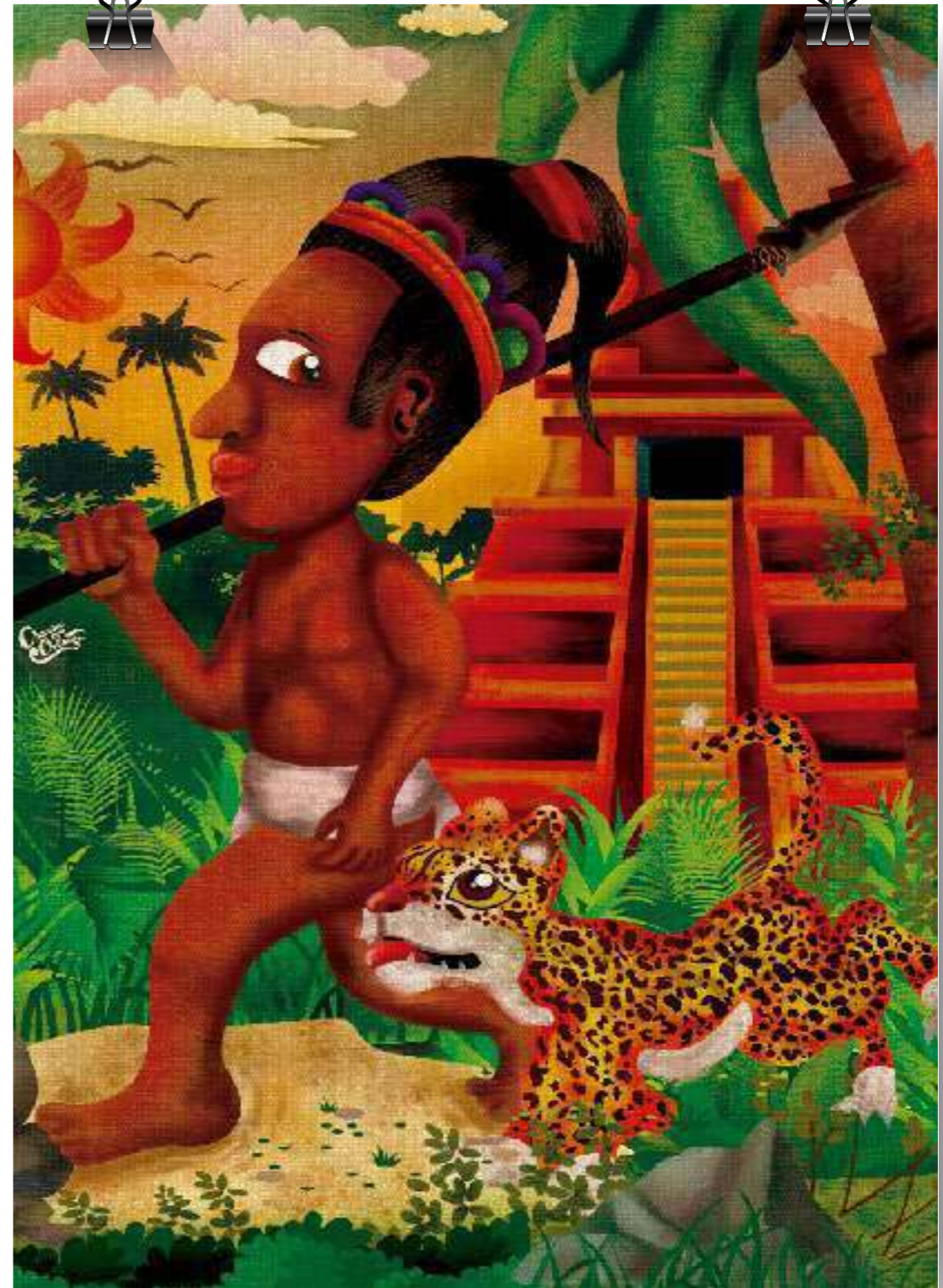
First Edition Commemorative Issue

Las Vegas, Nevada. USA 2015

CONCURSO DE ILUSTRACIÓN LAS VEGAS NEVADA E.U.A 2015
LIBRO DE FINALISTAS HISPANIC INTERNATIONAL CHILDRENS
ART EXHIBITION 2015
ILUSTRACIÓN " EL CONEJO Y LA LUNA" FINALISTA TÈNICA MIXTA



ILUSTRAFEST 2015 HOMENAJE A GABRIEL VARGAS
ILUSTRACIÓN EXPUESTA EN EL
MUSEO DE LA CARICATURA Y
UTILIZADA PARA IMAGEN DEL
EVENTO (BANNERS, WEB).



CONCURSO DE ILUSTRACIÓN LAS VEGAS NEVADA E.U.A 2016
LIBRO DE FINALISTAS HISPANIC INTERNATIONAL CHILDRENS
ART EXHIBITION 2016
ILUSTRACIÓN " CHAKTE Y SU JAGUAR" FINALISTA TÈNICA MIXTA